



## MomSpace™ ADA

### Accessible Comfort for All

MomSpace™ ADA ensures inclusive comfort for all mothers. This wheelchair-accessible pod features a spacious interior and the option to include a sink and fridge, creating a convenient and dignified pumping experience for everyone.

A better way to make your day, productive!

## Differentiators



COOL+COMFORTABLE

### QuietFlow™

Our proprietary QuietFlow™ system is designed to keep you cool by quietly circulating the air inside the booth while ensuring sound doesn't escape. The design of the Spaceworx QuietFlow™ airflow system allows the fresh air to flow in smoothly, powered by energy-efficient fans, and forcing stale air out through strategically positioned exhaust vents, ensuring that a proper balance oxygen level is maintained throughout the pod.

CLEAN+QUIET

### Reducing Decibels

Three Layers of soundproofing material with hygienic water resistant vinyl keeps the booth both quiet and sanitary... empowering the mother to provide for her baby in comfort and quiet.



## Differentiators

### MODULAR+COMPLIANT

## FireShield™ System (Optional)

FireShield™ (Patent Pending) is heat-activated fire suppression technology available in all our Pods, ensuring fire codes are met while maintaining modularity and flexibility to relocate units.



### PRIVATE+PRODUCTIVE

## Necessities for Pumping (Optional)

Plumbing free sink, electrical outlets, shelf, and mini fridge all located within easy reach simplify pumping at work for moms.

### DESIGN IT YOUR WAY

## Endless Designs

Create something special with our 3D product configurator, with over 200 possibilities of colors, choices and finishes.



A better way to make your day, productive!

## Technical Specifications

### Measurements:

- **Exterior:** 85"H x 67"W x 89"D\*
- **Interior:** 79"H x 61.8"W x 84"D\*
- **Door:** 36" x 80" RH
- **Weight:** 1400 lbs

\*Dimensions are approximate

### Workspace Solution:

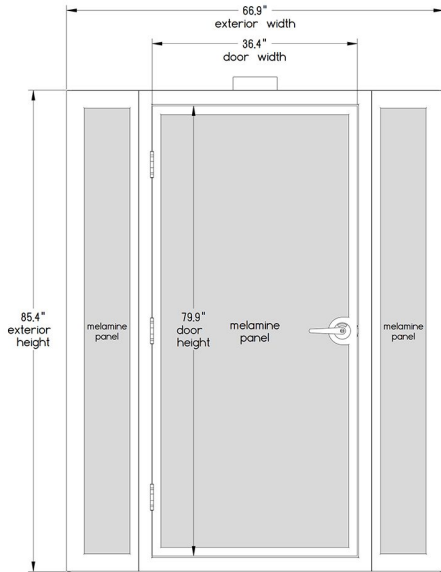
- **Power:** 6-8Ft Power Cord for Standard 110-120V Outlet Plug
- **3500- 4500k LED Lighting**
- **Light Switch for Lighting & Ventilation**  
(Motion Sensor Optional)
- **Quietflow™ Ventilation (4 fans)**
- **Power Outlet & USB Ports**  
Optional Data Port
- **Locking Door Handle With Occupied Status**
- **Acoustical Rubber Door Seal**
- **Powered Coated Steel Frame**  
(Black or White)
- **High Pressure Laminate Side Panels**  
(Black or White, Woodgrains for Upcharge)



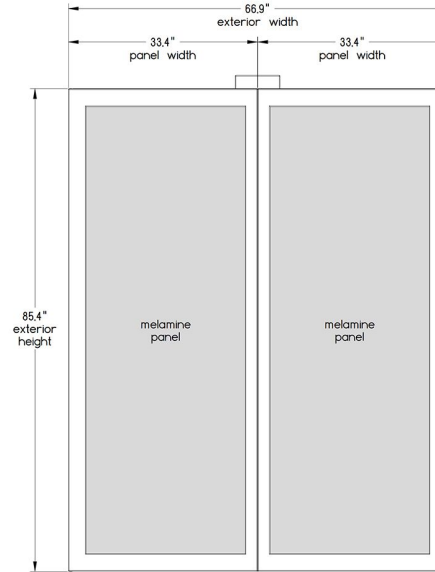
### Features:

- **Quietworx™ Acoustical Upholstery**  
(Optional Colors on Walls)
- **Black Vinyl Flooring**
- **Adjustable Leveling Feet**
- **Solid Panels (Black or White)**  
No Windows
- **Black Wood Grain Countertop Desk Height**  
Mounted in Center Rear Wall  
**Countertop: 12"x28"**
- **High Pressure Laminate Interior Panels**  
(Quietworx™ Vinyl for an Upcharge)
- **Fireshield™ Fire Suppression System**  
(Optional)
- **Design Patent (Pending)**

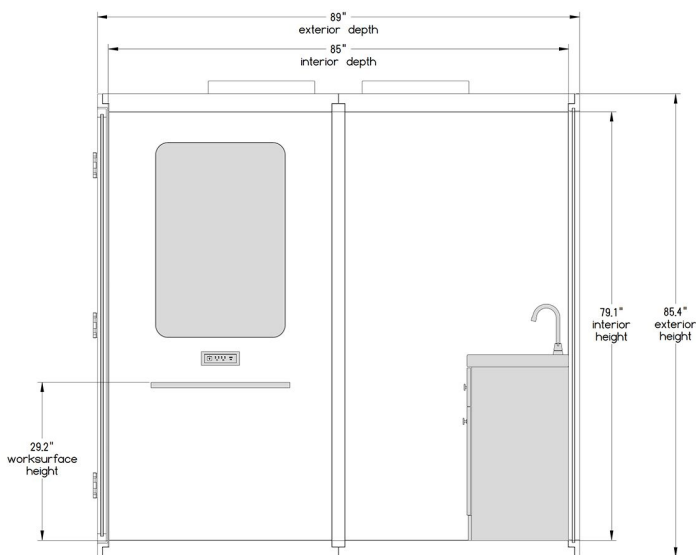
**Front View**



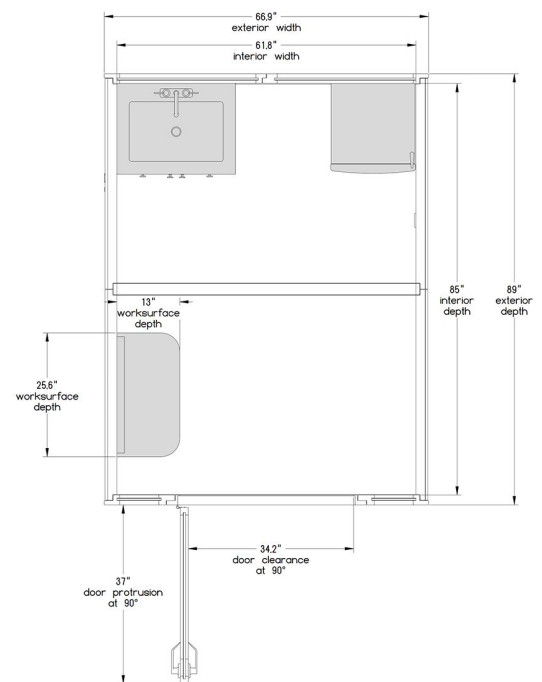
**Rear View**



**Side View**



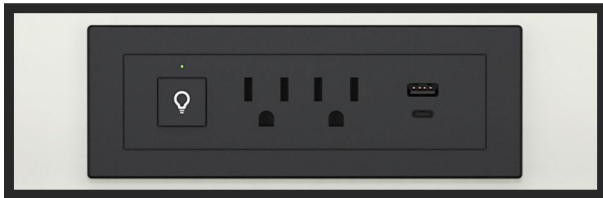
**Top View**



## A better way to make your day, productive!

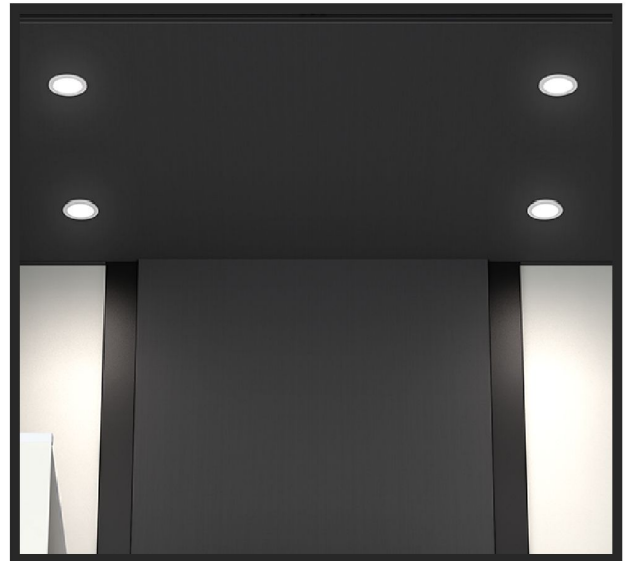
### Wall Mounted Power Module

Customizable power module with switches for lights and ventilation, 110 volt power outlet USB ports and optional data port.



### LED Lighting

4 energy efficient LED lights 3500k lumens (or custom upon request).



### Plug & Play Power Cord

6-8ft (or longer if required) 3 prong power cord that plugs into a standard 110 volt outlet. Booth draws no more than 5 amps when turned on.



### Heavy Duty Hinges



### Black Rubber Flooring



### Latching Door Handle

Commercial grade heavy duty stainless steel latching or optional locking door handle.



### Quietworx™ Door Seal

Rubber gasket door seal designed to tightly seal door for extra sound-proofing.



### **Shelf + Mini Fridge (Optional)**

Perfect blend of functionality and convenience with our shelf and mini fridge, seamlessly designed to boost productivity and efficiency for moms.



### **Cushioned Bench**

Standard Light Grey Vinyl Upholstery (Quietworx™ Vinyl colors available for upcharge)



### **Quietworx Acoustics + Hygienic Vinyl Upholstery (Optional)**

Over 24 vinyl colors available for the interior walls. An acoustic upgrade from the standard HPL panels.



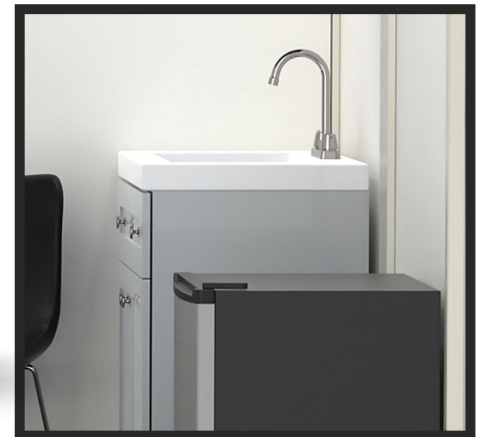
### **Woodgrain Side Panels (Optional)**

Optional laminate woodgrain finish on the side panels or dry erase board.



### **Plumbing Free Sink (Optional)**

Personalize your space with our sleek, customizable plumbing-free sink.



A better way to make your day, productive!

Optional:

Woodgrain side panels



Walnut Fiberwood Unicorn White Wood Planked Raw Oak Planked Coffee Oak Light Grey wood Black Wood Grain

Quiteworx Vinyl Colors

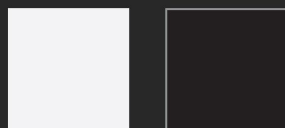


Whiteboard side panels



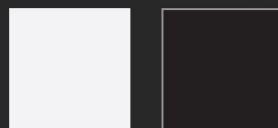
Standard Finishes:

Frame Color



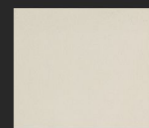
White or Black

HPL Panels (Interior + Exterior)



White or Black

Bench Vinyl



Lite Grey






A better way to make your day, productive!



Contact us

 [info@spaceworx.us](mailto:info@spaceworx.us)

 [spaceworx.us](http://spaceworx.us)

 +1 (866) 895-6044

**Spaceworx<sup>®</sup> For You**